




Saint Anne's Shrine Spring Social:

Rediscovering a Hidden Treasure



The Discovery
Fort Ste. Anne
French Devotion to Saint Anne
The Edmundites
Saint Anne's Shrine Emerges
Saint Anne's Shrine - through the years
Connections to St. Michael's College
Why St. Anne's Shrine Matters?

A black and white photograph showing a wooden sign in the foreground, slightly to the right, which reads 'WELCOME TO St. Anne's Shrine ISLE LAMOTTE, VERMONT CONDUCTED BY THE EDMUNDITE FATHERS'. The sign is mounted on two wooden posts. In the background, a church with a gabled roof and arched windows is visible, surrounded by trees. The church has a small porch with steps. The overall scene is a rural or semi-rural setting.

Edmundite

**Administration of
Saint Anne's Shrine**

**WELCOME
TO
St. Anne's Shrine
ISLE LAMOTTE, VERMONT
CONDUCTED BY
THE EDMUNDITE FATHERS**

**Modified presentation originally
prepared by**

Rev. Richard Myhalyk, SSE

The Discovery of the Region



Samuel de Champlain



In 1609 Samuel de Champlain discovered the lake that today bears his name.

Building of Fort Ste. Anne

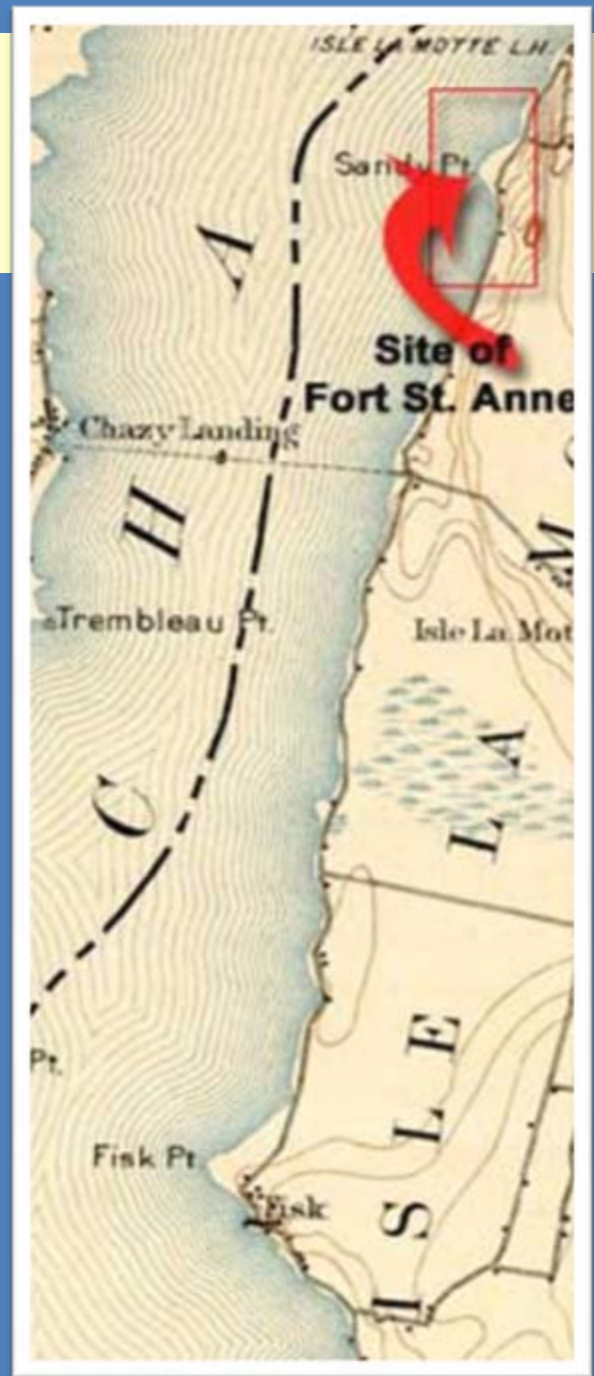


In 1666 the French built Fort Ste. Anne under the guidance of Pierre de St. Paul de la Motte

Fort Ste. Anne

Fort Ste. Anne was quite small, measuring only 144 feet by 96 feet.

The Fort was one of the earliest French outposts on the lakes.



Tgawistaniyonteh



- Jesuit priests served the troops and offered Mass at the Fort.
- The Native Americans never forgot The Shrine.
- Mohawk called the place “there a bell is suspended” or ***Tgawistaniyonteh***

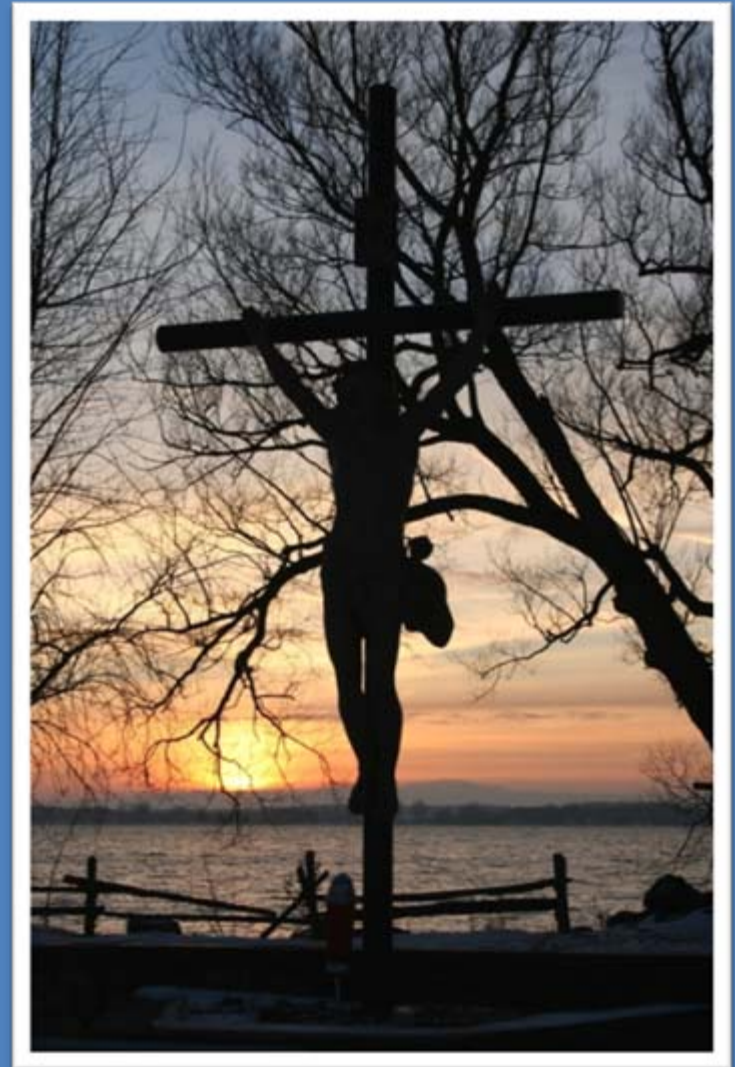
Harsh Conditions Prevalent



- Impenetrable wilderness, accessible only by water
- Subject to fierce winds and deep snows
- Scurvy was rampant
- Isolation and loneliness took its toll
- **Strong faith is what sustained early settlers**

Fort obliterated by mid-1800's

The sandy point where Fort Ste. Anne stood is still the site of the Way of Calvary at Saint Anne's Shrine.



The Enduring
Devotion
of the
French
to
Saint Anne



Anne and Joachim



After years of praying for a child their prayers were answered and Joachim and Anne were blessed with a child. The child was to be the Blessed Virgin Mary, Mother of Jesus.

[Resource: Life of St. Anne](#)

Jesus Grandparents



Saint Anne helped to raise Jesus. It is believed Jesus was with his grandparents, Saint Joachim and Saint Anne at the time of their passing.

French Devotion to Saint Anne

The French believed that Mary Magdalene, Lazarus, Martha, and other friends of Jesus crossed the Mediterranean Sea and landed at the southern French city of Marseilles.

They spread the news about Jesus' death and resurrection. According to this tradition Mary Magdalene's group brought with them the remains of Saint Anne.



French Devotion Spreads



- According to legend, the bishop, St. Auspice, buried the body of Saint Anne in a cave under the church of St. Mary in Apt.
- When barbarians invaded that area, the cave was filled with debris, forgotten until it was dug out by miners 600 years later during the reign of Charlemagne.
- The Sailors and Miners of the region around Marseilles were devoted to Saint Anne. Their devotion spread to other parts of Europe and eventually to the New World.

Ancient shrines to Saint Anne



Jerusalem



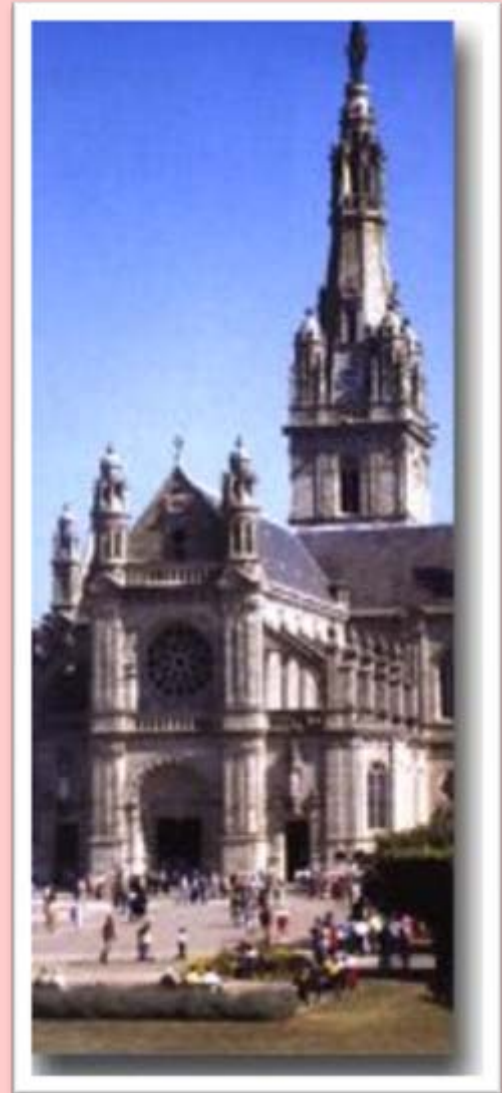
Apt, France

Saint Anne is the patroness of many including Brittany, France, a land of sailors.

[Patronage of St. Anne](#)

French Devotion Thrives

The great shrine of Sainte Anne d'Auray, founded in the 17th century, is one of the largest pilgrimage centers in Europe & especially popular among Bretons of France.



Devotion born in Canada



Settlers from the Bretons of France brought their devotion to Canada and established the Shrine of Sainte Anne de Beaupre near Quebec in 1658.

The Edmundites
established
in 1843
in France.
Devotion to
Saint Anne
Endures



Foundation of the Edmundite Fathers and Brothers



In July 1843 Fr. Jean Baptiste Muard and Fr. Jean Pierre Bravard moved into the badly ruined Abbey in Pontigny, France.

Mission of the Edmundites

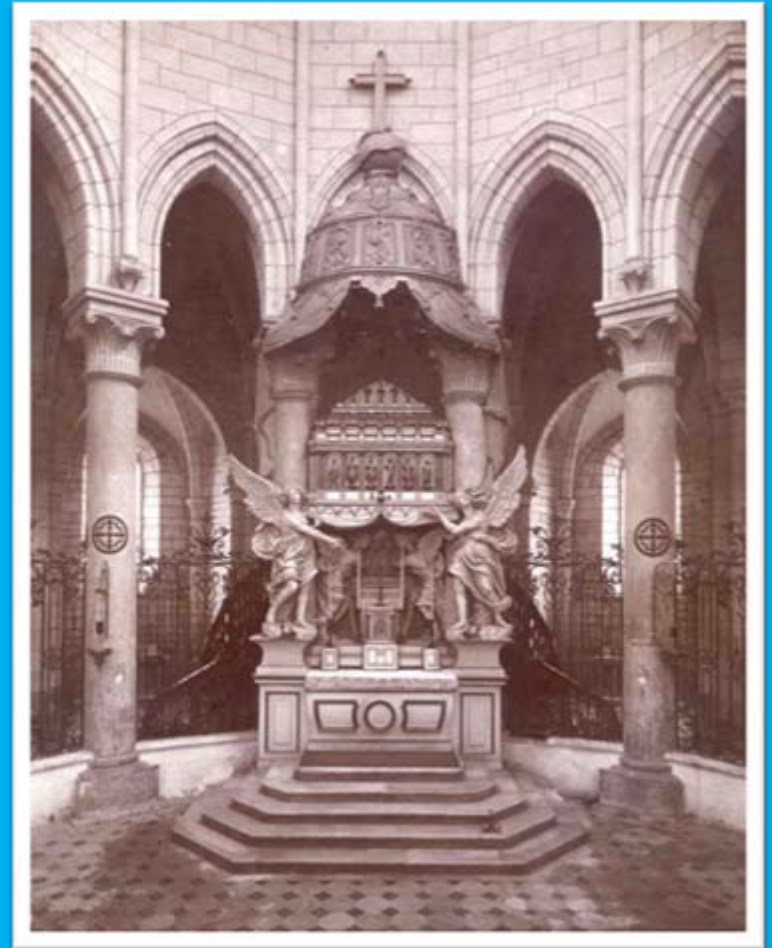
Evangelization
helping people to
reconcile with God
and the Church and
to participate more
fully in the life of the
Church.



St. Edmund (1174-1240)
Peacemaker, Father of the Poor, Patron of Afflicted Children

Pontigny – Burial Site of St. Edmund

Pilgrimages to Pontigny became a means to foster the importance of the Edmundite mission.



Mont-St-Michel – 2nd Site



In 1867, the Society of St. Edmund established a new foundation at Mont-St-Michel in France. Like Pontigny, it served as a place of pilgrimage and reconciliation.

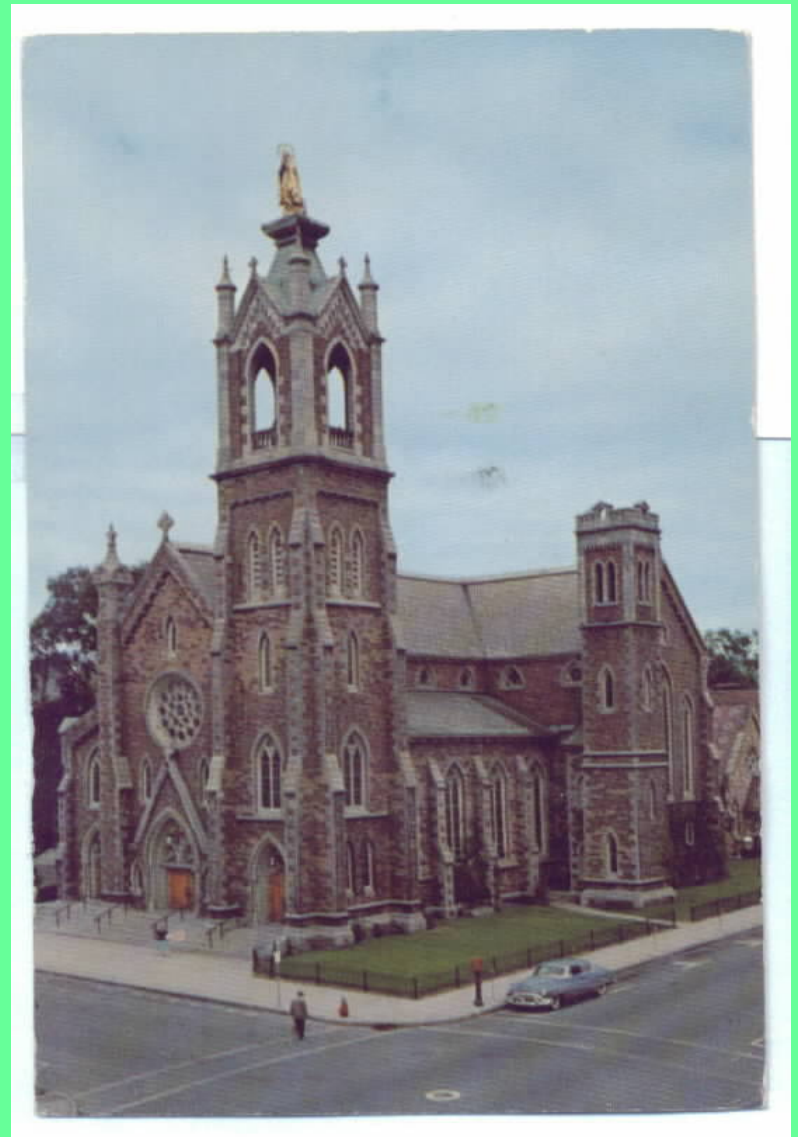
Mont-St-Michel



In 1877 the statue of St. Michael the Archangel was crowned as part of a pilgrimage of 25,000 people at Mont-St-Michel in France.

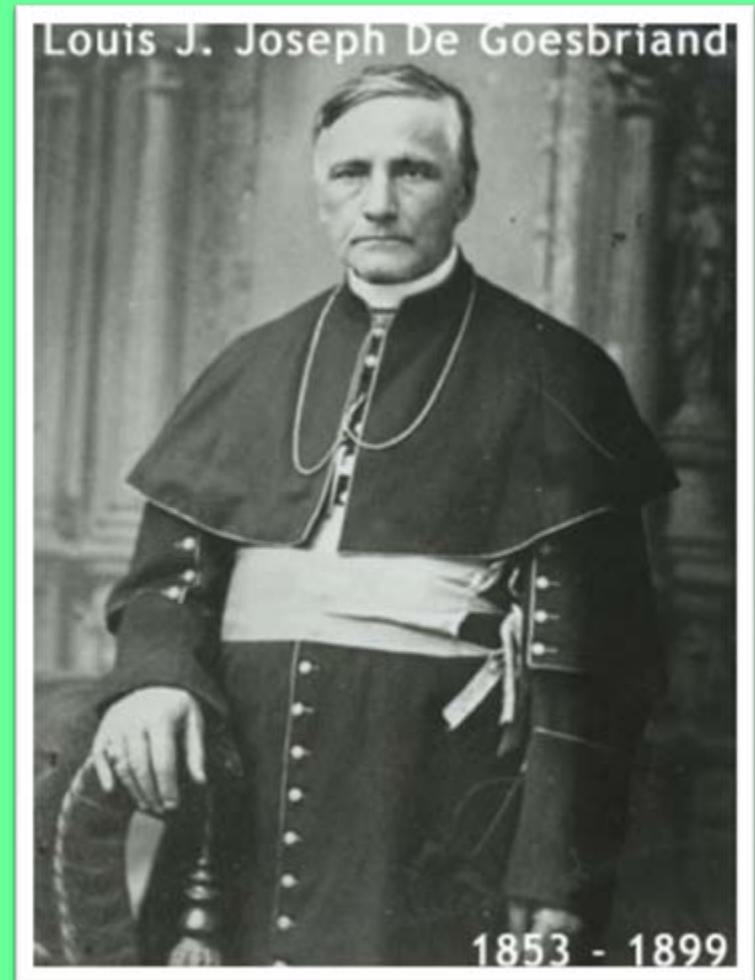
1853 Diocese
of Burlington
Formed

Connections with
Edmundites
Emerge

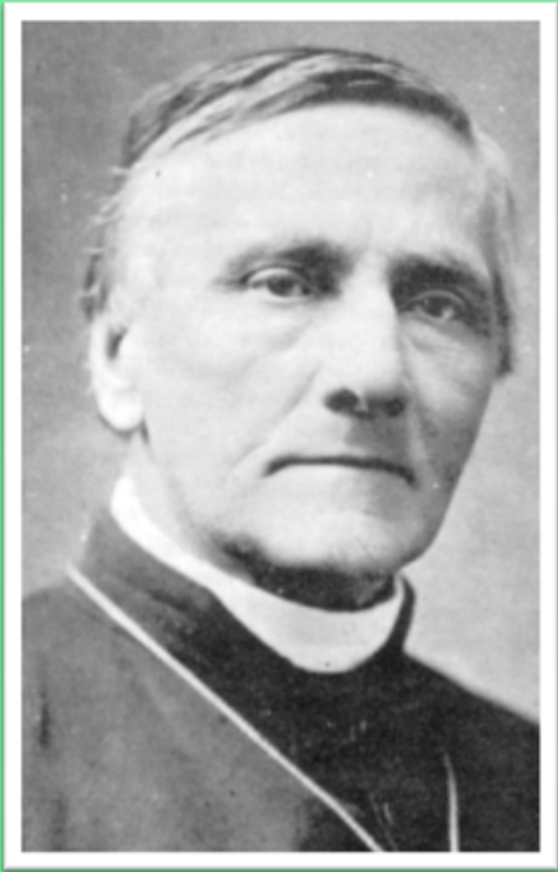


First Bishop of Burlington Diocese

- Louis de Goesbriand was named first bishop.
- Before 1850 Vermont only had two Catholic churches
 - Burlington (1830)
Cathedral
 - St. Albans (1847)
Immaculate Conception
- At the start there were about 10,000 Catholics
- After serving built to 15,000 Catholics, served by 7 churches and 5 priests.

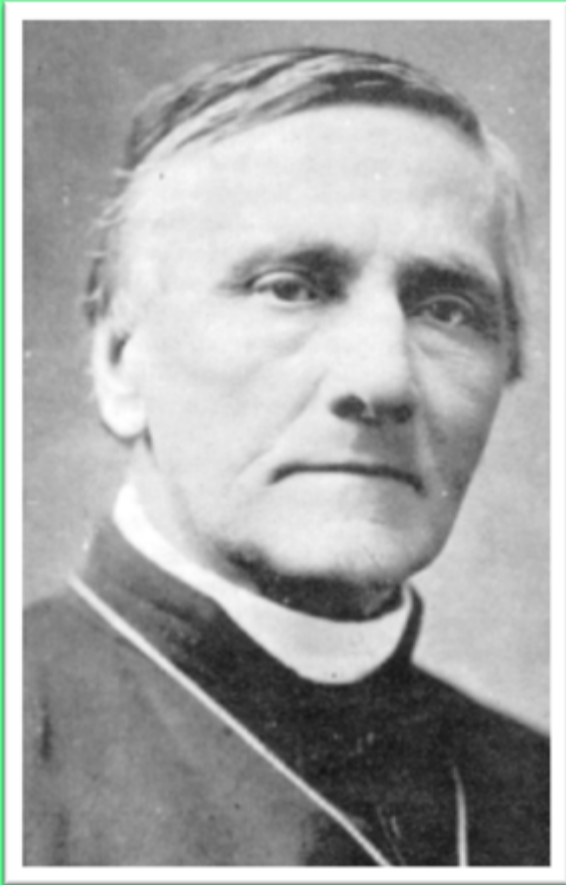


Bishop de Goesbriand



He had a deep devotion to Saint Anne. He pursued research on first settlement in Vermont and the site of the first Mass celebrated, believed to be at Fort Ste. Anne.

Bishop de Goesbriand



He published small book

- promoting the little known history of the area
- advocating renewed devotion to Saint Anne

Prayed that *“God grant us grace to see this devotion spread among us.”*

Fr. Joseph Kerlidou

The first pastor of the three parishes:

- A chapel was built in Alburg in 1852. One historian notes *“the oldest congregation in Vermont was that of a Catholic Church organized in 1731 in what is now Alburg.”*
- St. Joseph’s parish was founded on Isle la Motte in 1871.
- St. Rose of Lima parish was founded in South Hero in 1895.



Building St. Anne's Chapel

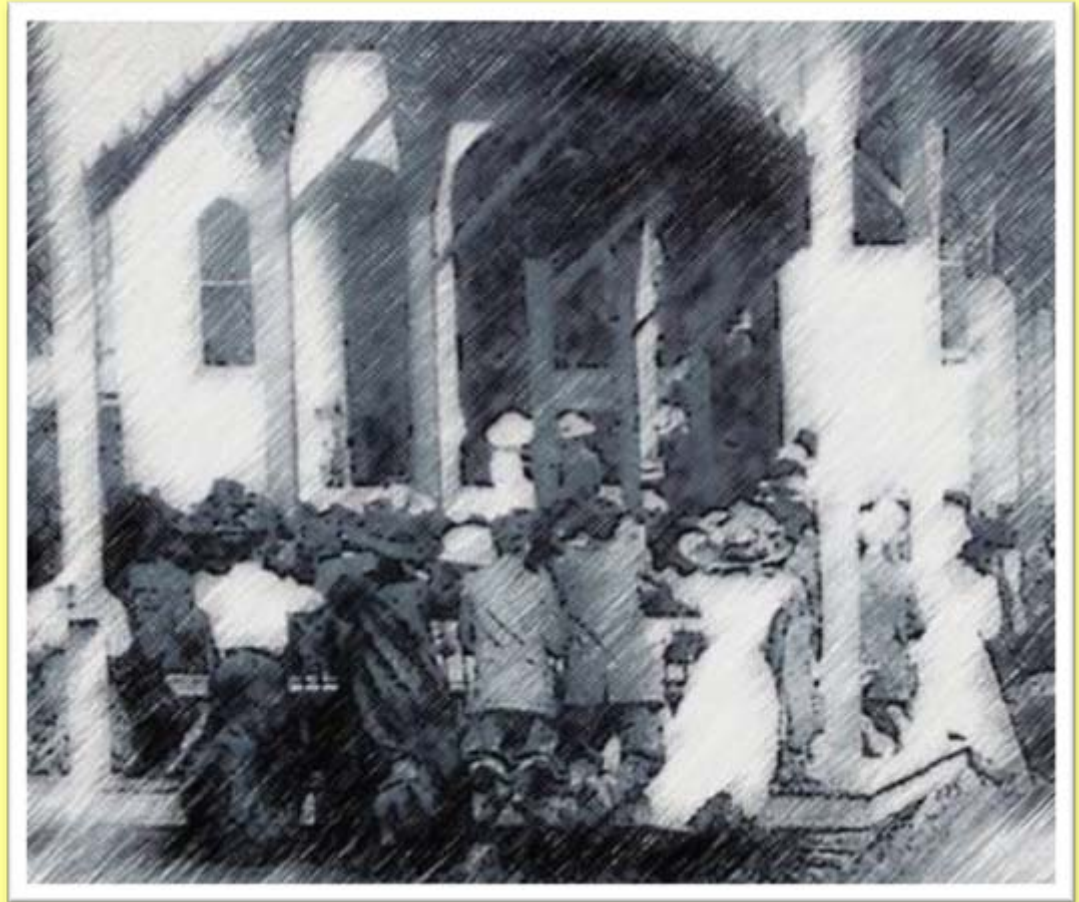
- In 1892 Fr. Kerlidou's research, interest and writings encouraged fundraising to purchase the land on which Fort Ste. Anne stood in order to preserve the history of its foundation.
- Within a year, a small chapel was built and a large statue of Saint Anne was donated by Breton clergy of the Diocese. These still grace the Shrine today.



Building St. Anne's Chapel

The first of many organized pilgrimages to Saint Anne's Shrine in 1893.

Nearly 2,000 people came for the blessing of the chapel.



Fr. Armand Prevel

In 1895 Fr. Armand Prevel, an Edmundite arrived in Vermont from France as a delegate of the Superior General to negotiate with Bishop de Goesbriand to obtain the parish in Swanton. In 1898 the Society opened St. Edmund's Juniorate in Swanton.



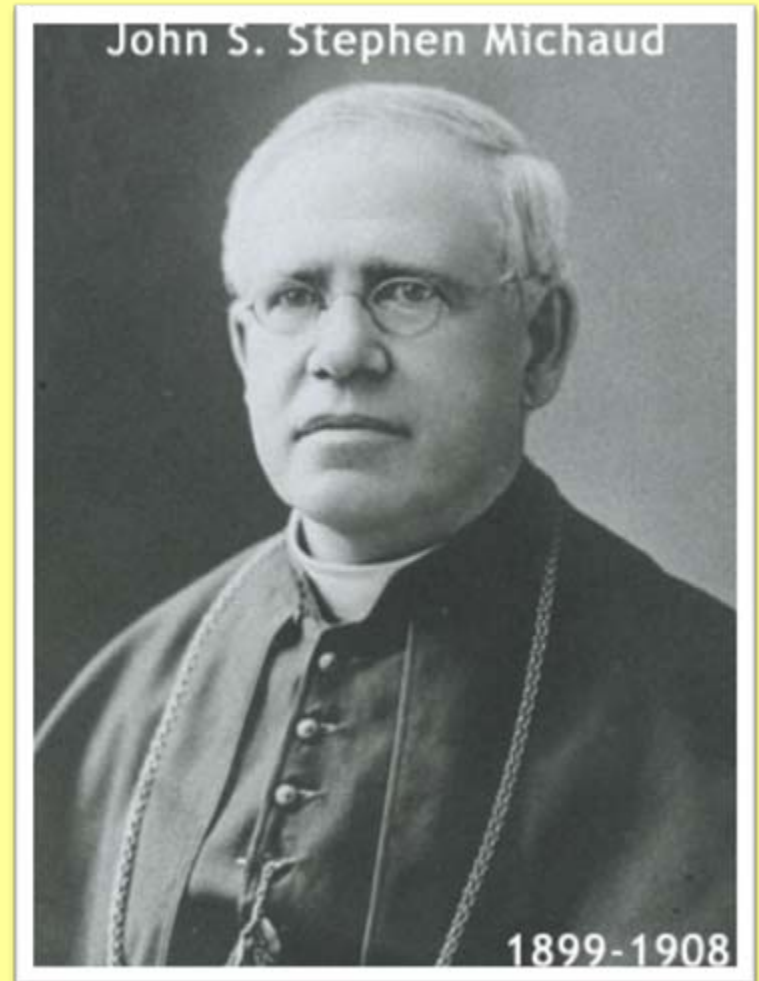
Saint Anne Offers Edmundites Hope



As religious life in France came under attack in early 1900's, everything was taken from Edmundites there. Only their new foundation in Vermont offered promise.

Bishop John Michaud

He became Bishop of Burlington in 1899. He was a great builder, who asked the Religious Hospitallers and the Sisters of St. Joseph to start the Fanny Allen Hospital in Colchester and the Loretto Home in Rutland.



Edmundite's Link to St. Michael's College & The Shrine

In 1904 Bishop John Michaud asked the Edmundites to establish a Catholic college in his diocese and assume the administration of Saint Anne's Shrine.



The Shrine Purchase

Fr. Edward Bernier purchased The Shrine property from the diocese for \$8,650 in 1921.



He and Fr. Eugene Alliot served The Shrine during the challenging years.

Fr. Alliot became the 5th president of St. Michael's College in 1931.

Bishop Edward Ryan

- He fostered a resurgence of devotional activity at the Shrine.
- Bishop Ryan, who served as bishop from 1944 until 1956, was plagued with ill health.
- He sought Saint Anne's help for healing when he presided at Shrine devotions and encouraged pilgrimages to The Shrine.



Edmundites Summer Retreat

The Edmundite Southern Missions spent several weeks each summer at Saint Anne's Shrine.

Fr. Francis Casey, the first Director of the Edmundite Southern Missions, would send financial contributions to help cover expenses as many visitors still do today.



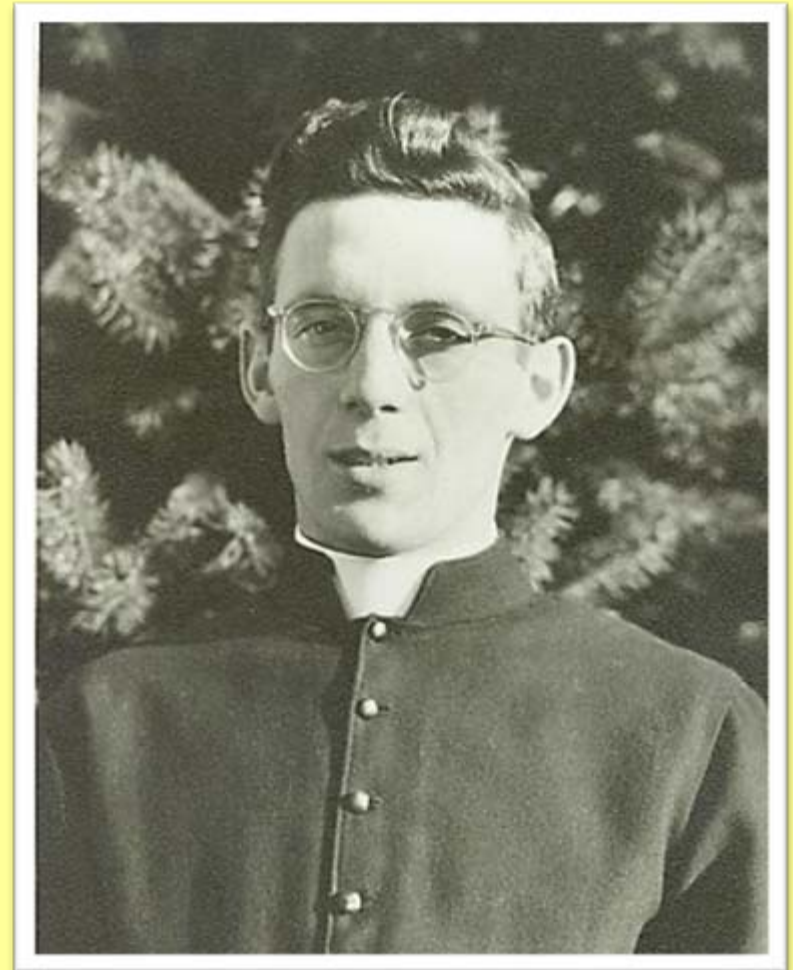
Edmundites & Sacred Heart Brothers



The Brothers of the Sacred Heart had a Camp on Isle la Motte.

New Shrine Director in 1956

34-year-old Father Maurice Boucher was asked to serve at Saint Anne's Shrine in 1956. In July 2004 we honored Father Boucher for his 45 years of service to The Shrine.



The Welcome Center & Rectory



Photograph taken around 1957

Veneration of the Relic



1962 Ladies of Saint Anne's



Fr. Boucher & The Knights of Columbus



Lord's Day Mass



Fr. Fredette & Fr. Boucher

34 Years & 45 Years



Welcoming the New Director



Father Boucher
welcomes

Fr. Brian Cummings
as the new
Spiritual Director of
Saint Anne's Shrine.



The Edmundites



Devotion Yesterday...

...And Devotion Today



The Edmundite Mission

Our specific mission as Edmundites is evangelization, manifesting to the people that the Church founded by Jesus Christ is for them.

We do this by our way of life and our pastoral and educational works.

In our particular apostolic endeavors, we seek to deepen the participation of people in the life of the Church.

The Edmundite Mission

We are sensitive to the call to minister to those who would otherwise have no one to minister to them, and we seek to build up the Christian community through means not otherwise provided by the local Church.

We believe that our mission is to proclaim in word and in deed the words of St. Paul,

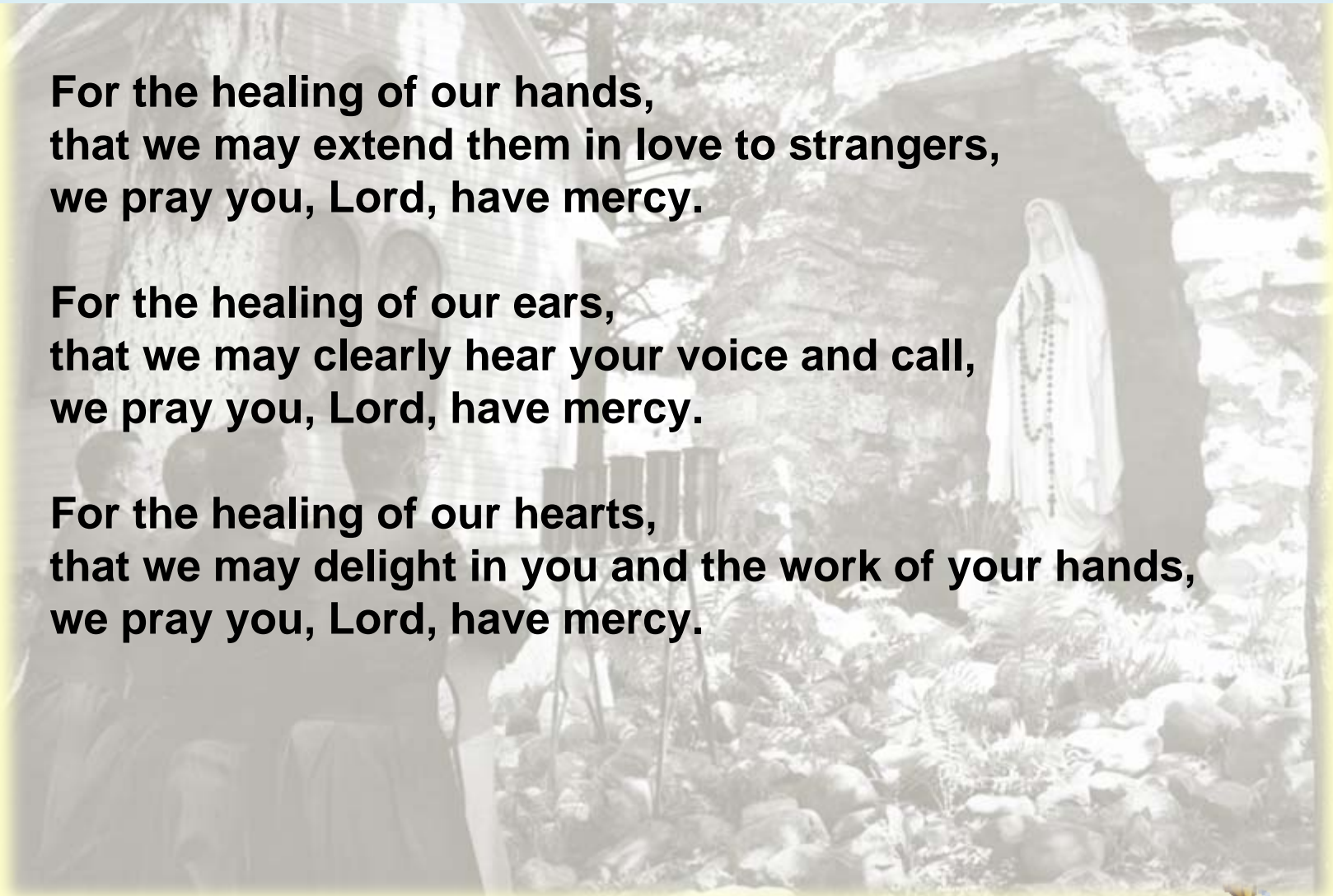
“You are strangers and aliens no longer. No, you are fellow citizens of the saints and members of the household of God”
(Ephesians 2:19)

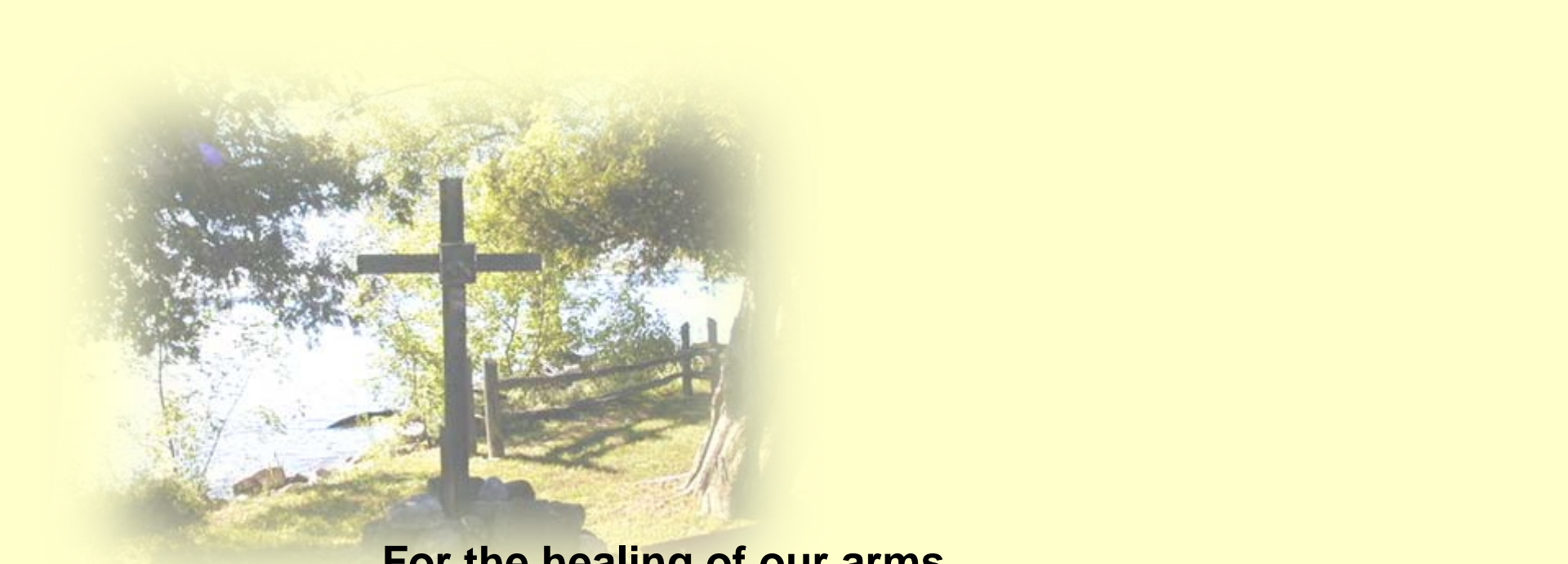
Edmundite Healing Prayer

**For the healing of our hands,
that we may extend them in love to strangers,
we pray you, Lord, have mercy.**

**For the healing of our ears,
that we may clearly hear your voice and call,
we pray you, Lord, have mercy.**

**For the healing of our hearts,
that we may delight in you and the work of your hands,
we pray you, Lord, have mercy.**

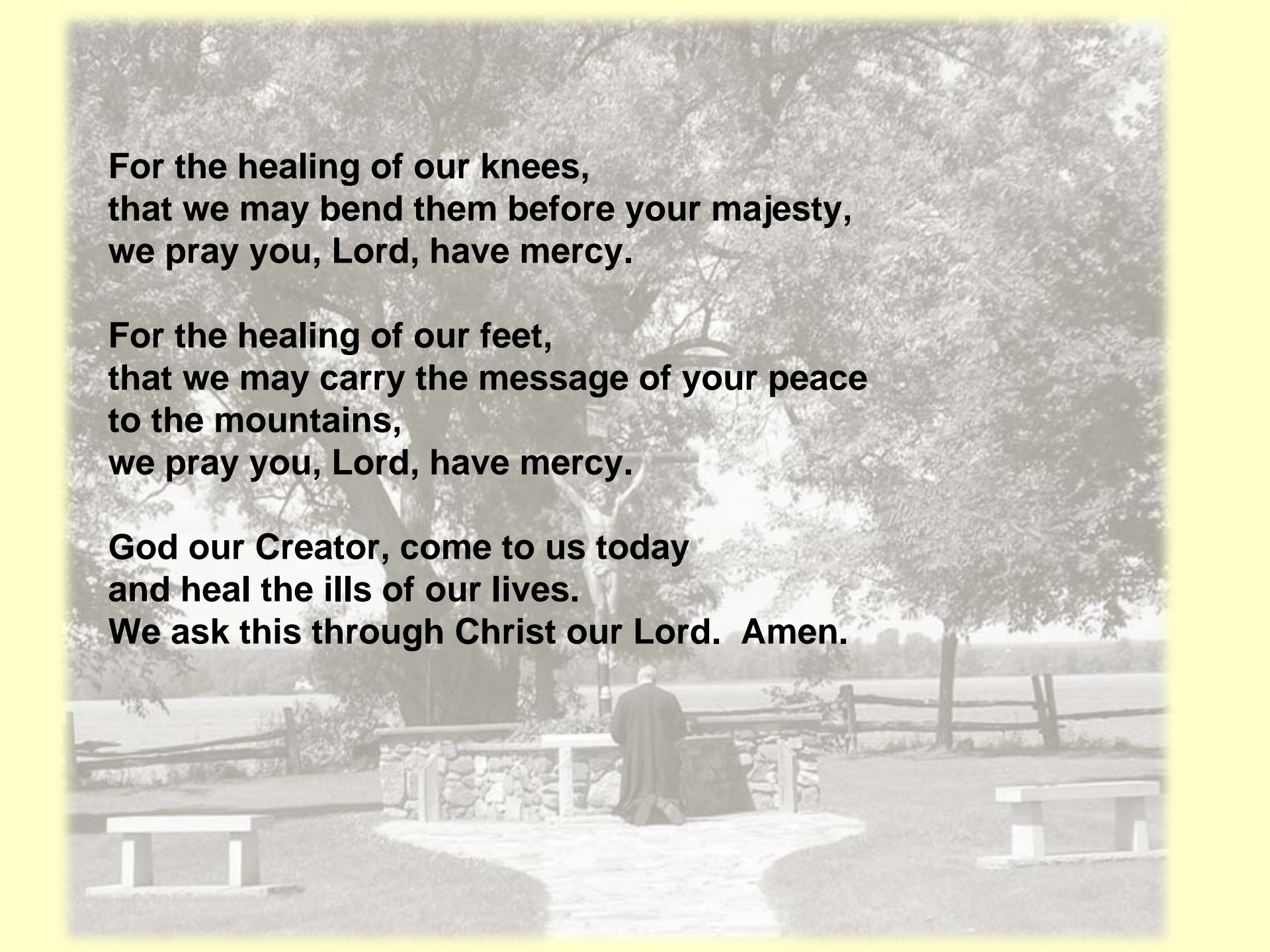




**For the healing of our arms,
that we may fashion a world of hope,
we pray you, Lord, have mercy.**

**For the healing of our legs,
that we may help carry the burdens of the oppressed,
we pray you, Lord, have mercy.**

**For the healing of our lips,
that we may always speak your praise,
we pray you, Lord, have mercy.**



**For the healing of our knees,
that we may bend them before your majesty,
we pray you, Lord, have mercy.**

**For the healing of our feet,
that we may carry the message of your peace
to the mountains,
we pray you, Lord, have mercy.**

**God our Creator, come to us today
and heal the ills of our lives.
We ask this through Christ our Lord. Amen.**

The Edmundite Community 2002



The Edmundite Chapter Celebrates at the Shrine 2010



Bishops Encouragement



Bishops throughout the region recognize and support the role of St. Anne's Shrine in renewing spiritual connections through peace and reconciliation.

Bishop Joyce and the Sick

Bishop Joyce
anoints the sick
and renews hope
for those seeking
healing through
the intercession
of Saint Anne.





**Bishop Angell
and
Fr. Boucher
celebrate
The Feast
of the
Assumption**

Bishop Moses Anderson, SSE



Bishop Terry LaValley



Bishop LaValley and New York Knights of Columbus Annual Pilgrimage to The Shrine

Bishop Salvatore Matano



Bishop Matano, current Bishop of Burlington, visits with Pilgrims at The Shrine.

Bishop Matano



Bishop Matano talks with students from
St. Michael's College Youth Group

Bishop Matano

Bishop Matano
leads the
VT Knights of
Columbus
at The Shrine



Bishop Angell & Fr. Cronogue



Saint Michael's College – Founders Hall



Fr. Mike and President Dr. John J. Neuhauser. The possibility of a retreat facility at Saint Anne's Shrine continues to be explored.

Statue of Our Lady of Lourdes

This statue originally rested on top of the Burlington Cathedral. In 1991 it was donated to The Shrine by the Burlington Diocese.





Views from Around St. Anne's Shrine





100th Anniversary Mass at 11:30 a.m. on August 29, 2004



Fr. Maurice Boucher, SSE (front) and Fr. Richard Myhalyk, SSE

**Fr. Brian Cummings,
Fr. Richard Myhalyk and
Mr. Jerome Monachino, who directed
a multi-parish choir for the
100th Anniversary Mass.**





Sr. Amelia Sluka, Missionary Sisters of Our Lady of Africa & Fr. Brian Cummings



**Then Lieutenant Governor Brian Dube (white shirt and tie) spoke
after 100th Anniversary Mass**





Fr. Boucher, Fr. Cote, Fr. Cummings, Fr. Berube, & Fr. Myhalyk

The College Connection



Saint Anne's Shrine continues to bridge connections with St. Michael's College

SMC Student Retreat



*St. Michael's College students enthusiastic
to attend retreats at Saint Anne's Shrine*

SMC Students at The Shrine



Students enjoy the grounds and the lake during a visit.

Sisters of the Servants



Sisters spend a day of reflection at St. Anne's.

Knights of Columbus



The Knights are regular visitors to The Shrine.

Pilgrims enjoy Mass at The Shrine



Fr. Mike Cronogue, SSE



*Sharing joy at
Saint Anne's Shrine.*



Hundreds enjoy 2010 Harvest Dinner



Why
does
St. Anne's
Shrine
matter?



Here's why it matters...

Every year
thousands of visitors
enjoy the peace
and solace of
Saint Anne's Shrine.
It is a source of
reflection, hope
and renewal.



Here's why it matters....

Ask the
generations
who worship
and
strengthen
their faith
together.



Here's why it matters...

Ask those inspired by liturgies in the open air pavilion surrounded by nature and the work of God.



Here's why it matters...

Ask those whose faith has been renewed through spiritual inspiration found at The Shrine.



Here's why it matters....

Ask those
who have
found peace
and solitude
to restore
their spirit
and renew
their soul.



Here's why it matters...

Ask those who have been healed, strengthened or encouraged through the intercession of Saint Anne.





Your contributions to Saint Anne's Shrine Spring Mission will:

- Enable much needed repairs and upgrade of driveways and walkways before the Shrine opens for the 2011 Pilgrimage Season.
- Replace stones in all driveways.
- Complete first stage of re-sloping, ditching, and landscaping estimated to cost between \$10K and \$15K.
- Complete other activities needed to prepare the Shrine for the opening of the 2011 Pilgrimage Season.

We are all very grateful for your support!

A white church with a prominent dome and arched windows, surrounded by lush greenery and trees. The church is the central focus of the image, with its white exterior contrasting against the green foliage. The dome is a dark color, and the windows are arched, giving it a classic, serene appearance. The background is filled with various types of trees and bushes, creating a peaceful, natural setting.

Thank you for your support of
the Spring Mission.

2011 is the year to
Rediscover this Hidden Treasure
Saint Anne's Shrine